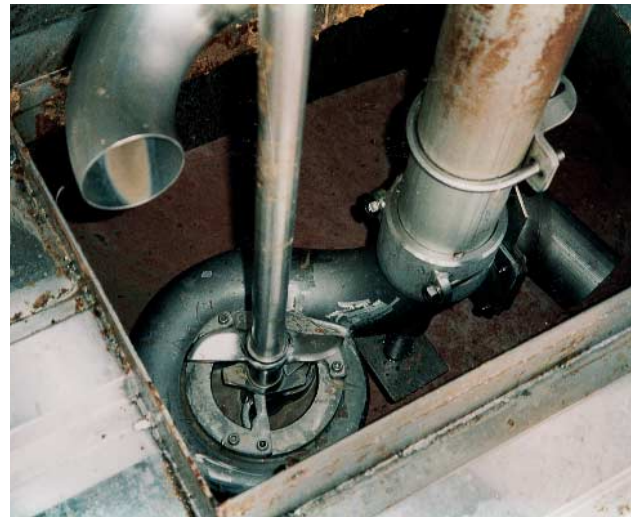


Fish, Chopper Pump with submerged parts in acidproof stainless steel

Landia centrifugal pump type MPFR-I, with 18,5 kW motor and 5" pump pipe. Especially suited for combined chopping and pumping of e.g. fish waste in connection with the production of fish silage. Built-in mixing equipment for combined chopping and mixing before pumping.



Fish Waste Handling Pump

Fish processing waste and whole waste fish are chopped and pumped during the process of e.g. fish silage production.

The picture shows a long shaft Landia motor pump installed in a stainless steel tank. The tank is filled with fish waste, the pump chops and mixes the tank contents and finally pumps the completely homogenous sludge to a storage tank.

Quality in every detail

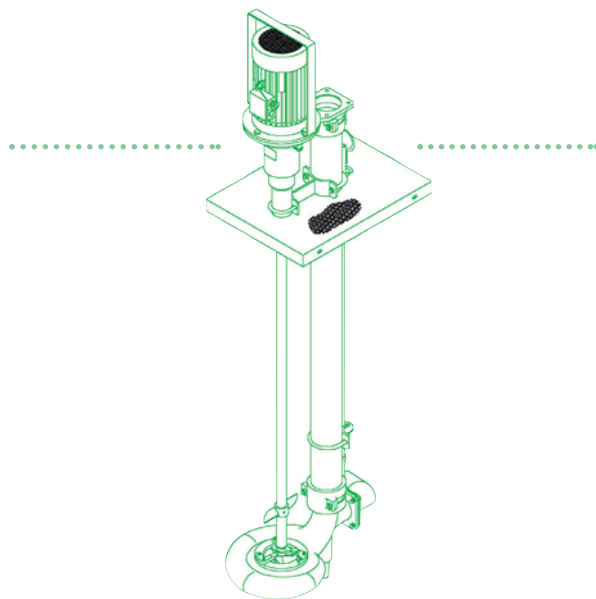
Fish Waste in the Mixing Tank:



Fish Silage after Being Chopped and Mixed by the Pump:



Long shaft pump MPFR-I



- Special pump for the fish industry with shredder propeller and extended knife system.
- All submerged parts in acidproof stainless steel.
- Bearings lubricated by the medium.
- Mounting equipment for mixing tank.
- Reliable and easy to operate.

Landia also manufactures stainless steel submersible and dry installed pumps. Contact us for further information.

We reserve the right to make technical alterations.

The text and technical data given may not be reproduced partly or completely without permission from Landia A/S.
AHOOB.C15-08.06.04

Please contact:



Landia A/S
Industrivej 2
DK-6940 Lem St.
Tel.: +45 97 34 12 44
Fax: +45 97 34 16 98
e-mail: info@landia.dk
www.landia.dk